



**YARLINGTON HOUSE**  
SOMERSET'S PREMIER WEDDING VENUE

A Quintessentially  
English Wedding Venue

# A warm welcome to Yarlington House



Yarlington House is a gem of an English country house built in the heyday of the elegant Georgian period and the perfect venue for your wedding day.

Constructed of mellow red brick with stone facings it is set in its own grounds of parkland thus giving complete privacy. Almost as far as the eye can see would be exclusively yours for the day.

Although formal in aspect, it is very much a family home lived in by Count and Countess Charles de Salis and their family.

Weddings take place opposite the front of the house. There is a wooden bridge going over the ha-ha. Numbers can be flexible and we are always happy to talk through your requirements.

Civil Ceremonies are licenced to take place under the apple pergola. If a more traditional ceremony is sought after, the village of Yarlington also offers a delightful little church just down the road from the house.

The gardens are simply stunning with many features set within a ha-ha (sunken wall): an apple pergola, a laburnum walk, a parterre within pleached limes, a classical sunken garden – all scattered with statuary and other garden ornaments.

The gardens have in fact proved so popular with wedding couples that uniquely we offer to them the use of the gardens for a brunch or similar daytime event the following day – at absolutely no extra charge from Yarlington House. Please take the opportunity to discuss this option with us.



A pleasure to roam around and a magical backdrop  
for memorable photographs.

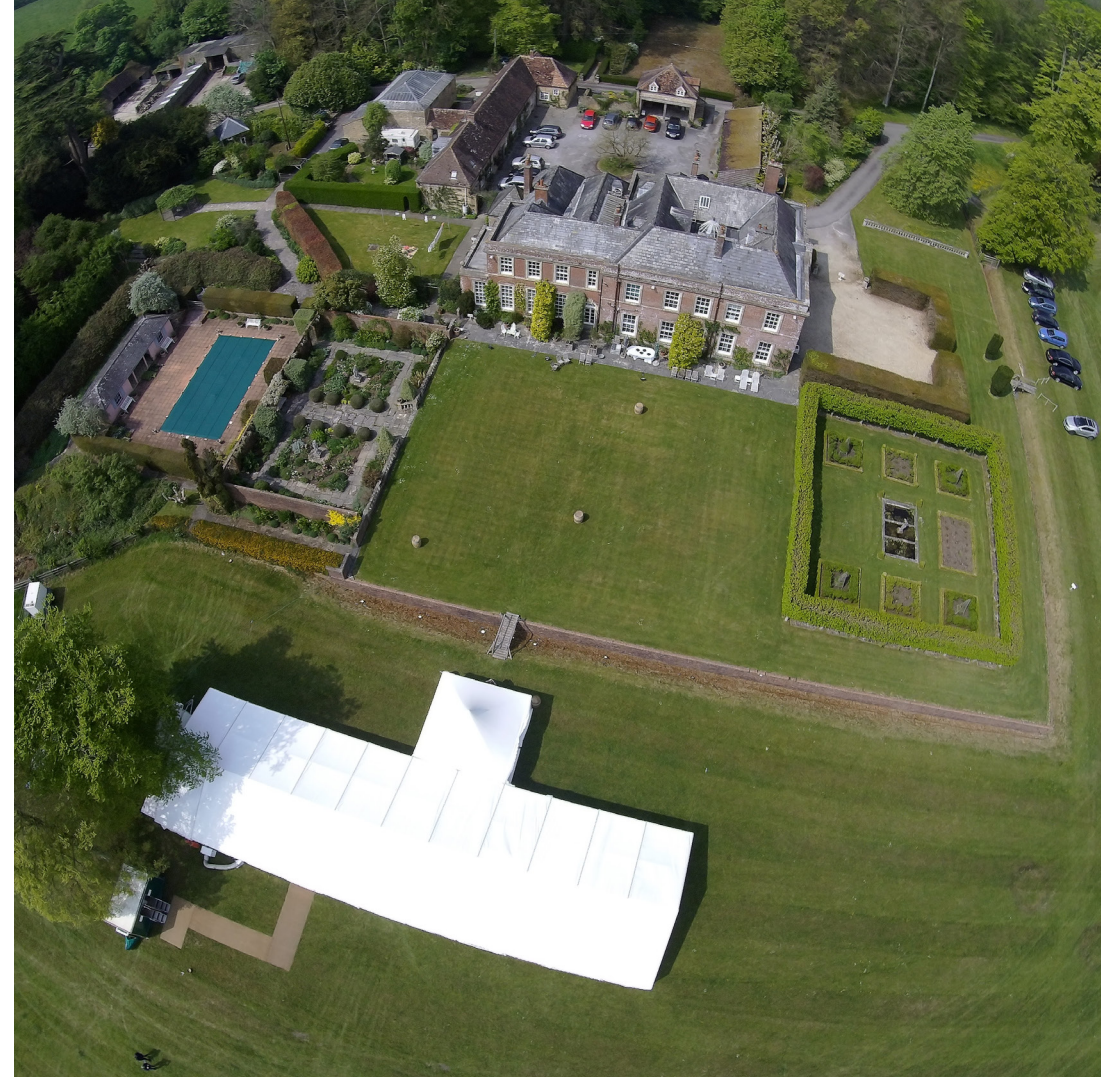


# The gardens

The gardens are stunning with a wealth of interesting features set within a ha-ha (sunken wall). Although obviously at their best during the summer months, there is always something of interest to enjoy throughout the year. They make a magical backdrop for truly memorable wedding photographs.

The house is approached through the very private drive with woodland on one side and mature trees on the other. The gardens are set within their own parkland so that for almost as far as the eye can see becomes the client's exclusive world for the day.

**The rose garden** nestles invitingly behind the pleached limes with the lily pond in the centre. **The wisteria arbour** provides a colourful backdrop in May. **The sunken Italian garden** contains a plethora of roses and flowering shrubs – a riot of colour in the summer months graduating to yellows and oranges in the autumn. **The apple pergola** makes a romantic setting for photographs. It is licenced for Civil Ceremonies and can equally be used for a blessing. **The golden laburnum walk** is a blaze of gold in the spring and provides an enchanting 'aisle' up to the apple pergola for a newly married couple.



For those who feel like a stroll, **the woodland dell** has the original Victorian winding paths fashioned like an amphitheatre. **The kitchen garden** is contemporary with the house. Its original high brick walls and 18th century box edged beds make an attractive setting but still fulfil their original purpose of providing produce for the house.

After dark, the front of the house is floodlit and this extends the enjoyment of the house – croquet has been played on the lawn after dinner!

# Suppliers and other details

## Catering

Yarlington House recommends the following caterers. Between them they cover a wide spectrum of tastes and styles to fulfil every ambition and every pocket. All are more than happy to talk over your event with you to see that you get just what you want on the day but please feel that you can ring up and discuss with us any catering arrangements.

### Victoria Blashford-Snell

*A 3 course meal is approximately £48 plus VAT and staff*

01963 31 937 | 07976 815 015  
info@blashford-snell.co.uk  
blashford-snell.co.uk

### Dorset Delights Catering

*Cold Lunches and Tea only. Approximately £20 plus VAT and Staff*

07783 928 532  
dorsetdelights@hotmail.co.uk  
dorsetdelightscatering.co.uk

### Home table

*Specialise in Fire Pit dining. Approximate 2 course meal is £35 plus staff*

Nel and Paul  
07884 150 639  
nel@hometabledining.com



## Marquees

Yarlington House recommends two marquee suppliers who can erect marquees of almost any size, shape and style. Porta Loos will be required for weddings. Your marquee company can advise on these. Marquees are normally erected opposite the front of the house on the Thursday before the event. Guests can mingle on the front lawn for Canapés, and there is a charming bridge which takes you over the ha-ha to the marquee.

### Abbas Marquees

Steve Laycock

01761 865 065 | 07786 060 73  
enquiry@abbasmarquees.co.uk  
abbasmarquees.co.uk

### Adams Marquees

James Morris Adams

01458 899 533 | 07771 718 294  
adamsmarquees@gmail.com

# Suppliers and other details

## Flowers

### Kate Robinson Flowers

07906 580 361  
kate@katerobinsonflowers.co.uk  
katerobinsonflowers.co.uk

### Fleur Provocatur

07760 106305  
info@fleurprovocateur.co.uk  
fleurprovocateur.co.uk

### The Flower Shop Bruton

01749 812 465  
jo@theflowershopbruton.co.uk  
theflowershopbruton.co.uk

## Photographers

### Graham Hiscock

01963 344or34189 | 07584 195 312  
grahamhiscock@btinternet.com

### Adrian Harvey

01747 828 178 | 07948 371 767  
adrianharvey@me.com  
adrianharvey.co.uk

### Dave Watts Photography

07885 646 506  
davewattsphoto@gmail.com  
davewattsphotography.co.uk

Please get in touch with these recommended suppliers for your wedding quote. You are also welcome to use other suppliers, however please note that a 15% surcharge will be added.



## Stay

**Yarlington House** can offer bed and breakfast to up to 14 guests.

**The Yarlington Yurt** is sited in a secluded spot in the grounds. It is a two pod arrangement sumptuously decorated in French 18th century style and sleeps four comfortably.

The Yarlington Yurt can be booked directly through Canopy & Stars.

There are also a number of good hotels available in the area and a wealth of bed and breakfast accommodation nearby. Look at our website for more details.

# Exclusively yours for the day

Exclusive use at Yarlington House means exactly that.

The house is approached by its own private drive and is set in its own parkland. Almost as far as the eye can see is therefore yours for the day.



## Weddings

### Use of the garden only

For Civil Ceremony only (2 hours max*)	£1,500
For Civil Ceremony & Reception/Wedding Breakfast	£3,000

### Civil Ceremonies

Yarlington House can offer Civil Ceremonies in the enchanting Apple Pergola.

For Civil Ceremony only (2 hours max*)	£1,500
--	--------

\* Extension of hours for Civil Ceremonies by negotiation only

### Bed and Breakfast

Guests can stay in the house for £80 a night per person.  
For further information, please see the Yarlington House website.

### The day after your wedding

Subject to certain conditions, you are very welcome to use the garden the morning after your wedding for a brunch or other similar daytime event at **no extra cost** from Yarlington House. If you use a marquee for this you must however clear it with the caterer and marquee supplier.



Yarlington House is a special family home that we would like to share with you on your wedding day.

## How to find us

The village of Yarlington is situated 4 miles north west of Wincanton, Somerset - just off the A371 Wincanton/Castle Cary road.

For users of SatNav, the postcode of Yarlington House is BA9 8DY.

### From London and the East

Take the A303 to the Wincanton turning and then follow the A371 signed to Castle Cary.

Pass Holbrook House on your right and, after a mile and a half, the village of Yarlington is sign-posted off to the left.

**Coming from the North**, this sign is again on the A371 signed to Wincanton but on the right three miles out of Castle Cary. Ignore the first sign to Yarlington (a fork) and take the second (a cross roads).

After half a mile turn right where it is again signed to Yarlington. Yarlington House is a hundred yards on the left just past a pink house. The entrance is through stone gateposts without actual gates.



### From the West on the A303

The village of Yarlington is signed off left 4½ miles after the Sparkford roundabout.

After turning off, straight over the first cross roads and take the next left signed to Yarlington.

Yarlington House is a hundred yards on the left just past a pink house. The entrance is through stone gateposts without actual gates.

**If you get lost** and find yourself at the bottom of Yarlington village by the pub (The Stag's Head), look around for the telephone box. Go up the hill with the telephone box on your right and Yarlington House is at the top of the hill on the right.

**When visiting before the event**, take the left fork at the top of the drive, through the iron gates and into the rear courtyard. Park where convenient and knock at the back door.

**Cars can be left overnight.** On the day of the event, car parking for guests is on the grass close to the house and will be clearly signed.